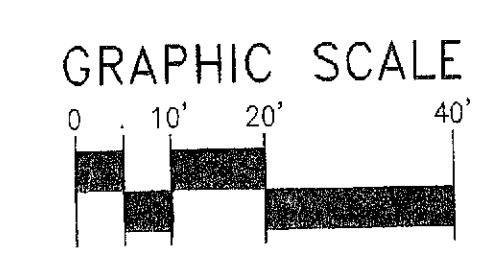
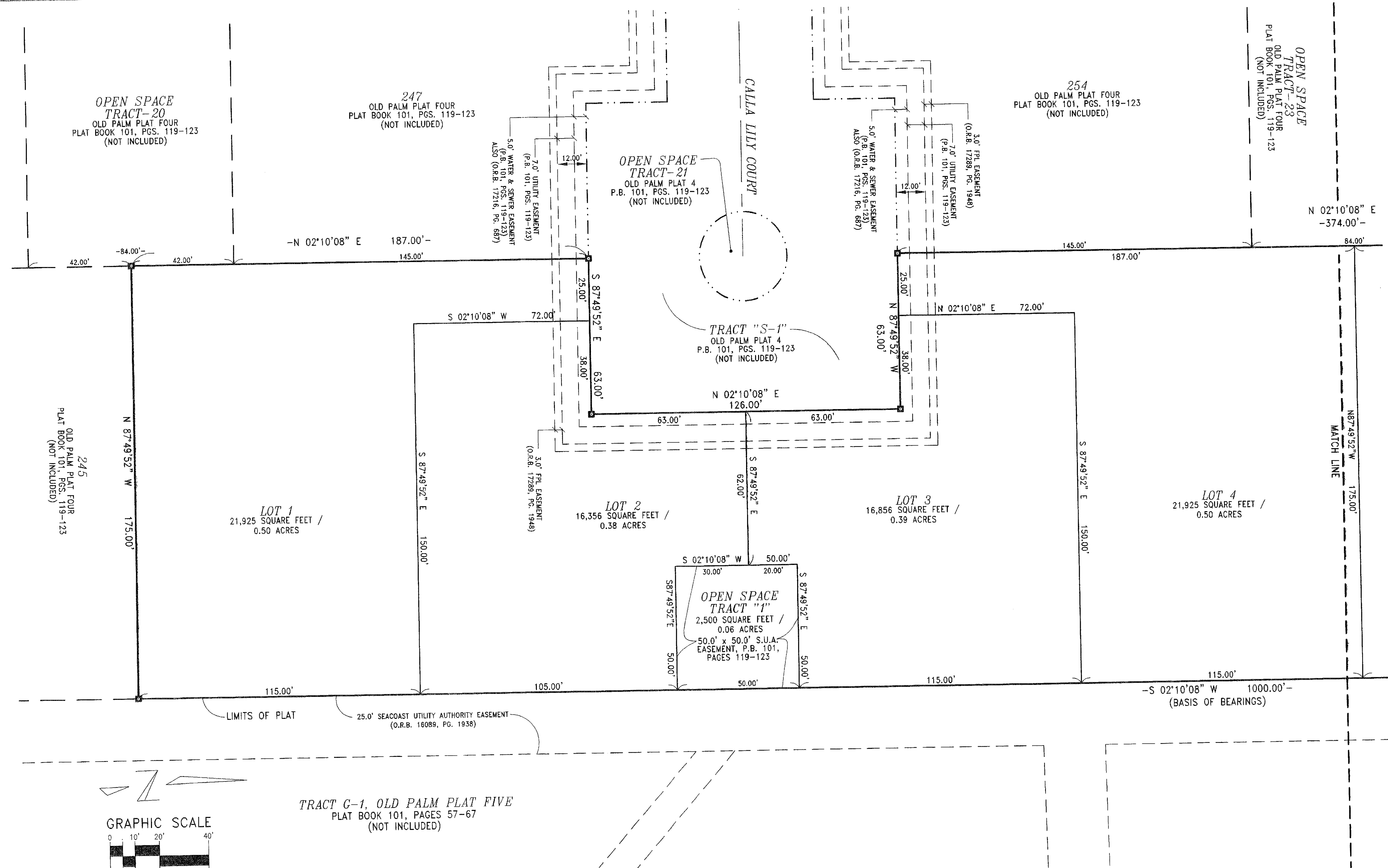
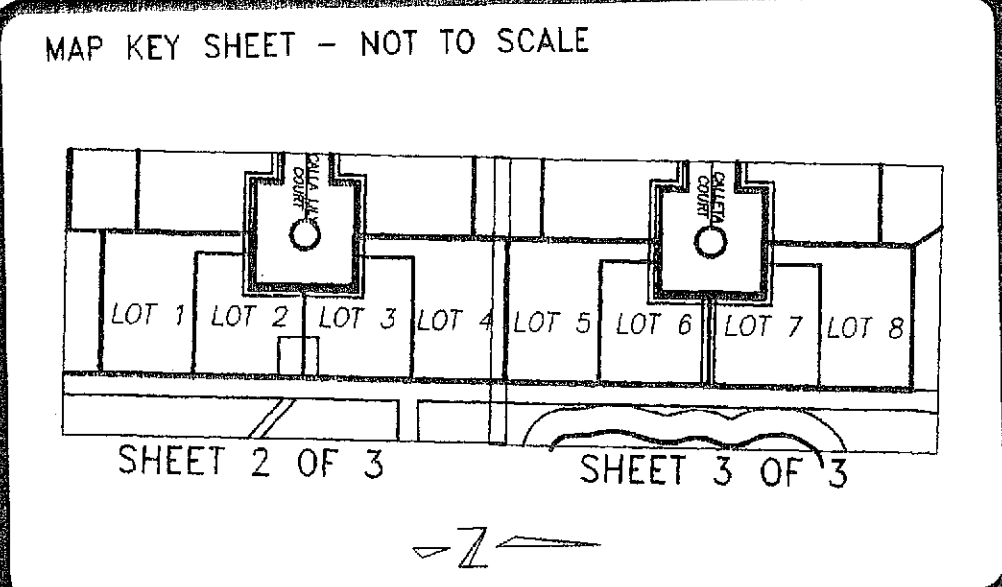


STATE OF FLORIDA
 COUNTY OF PALM BEACH
 THIS PLAT WAS FILED
 FOR RECORD AT _____ M.
 THIS DAY OF _____ 2011
 AND DULY RECORDED IN PLAT
 NO. _____ ON PAGES _____
 THRU _____
 SHARON R. BOCK
 CLERK AND COMPTROLLER
 BY _____ D.C.

OLD PALM PLAT FOUR PARTIAL REPLAT

A REPLAT OF LOT 246, OPEN SPACE TRACT 22, LOTS 255 & 256, OPEN SPACE TRACT 25 & LOT 265, OLD PALM PLAT FOUR, AS RECORDED IN PLAT BOOK 101, PAGES 119 THROUGH 123, PUBLIC RECORDS OF PALM BEACH COUNTY, FLORIDA, LYING IN THE WEST ONE-HALF OF SECTION 02, TOWNSHIP 42 SOUTH, RANGE 42 EAST, CITY OF PALM BEACH GARDENS, PALM BEACH COUNTY, FLORIDA
 SHEET 2 OF 3
 AUGUST 2011



LEGEND OF SYMBOLS & ABBREVIATIONS:

<ul style="list-style-type: none"> ■ = 4"x4" CONCRETE MONUMENT STAMPED "P.R.M. LB4897" OR AS NOTED. P.R.M. = PERMANENT REFERENCE MONUMENT CONC. = CONCRETE MON. = MONUMENT C/L = CENTERLINE 	<ul style="list-style-type: none"> R = RADIUS L = ARC LENGTH Δ = DELTA CB = CHORD BEARING P.C. = POINT OF CURVATURE P.T. = POINT OF TANGENCY SUA = SEACOAST UTILITY AUTHORITY 	<ul style="list-style-type: none"> W.L.E. = WATER LINE EASEMENT U.E. = UTILITY EASEMENT N.P.B.C.I.D. = NORTHERN PALM BEACH COUNTY IMPROVEMENT DISTRICT FPL = FLORIDA POWER & LIGHT L.A.E. = LIMITED ACCESS EASEMENT L.B.E. = LANDSCAPE BUFFER EASEMENT 	<ul style="list-style-type: none"> L.M.E. = LAKE MAINTENANCE EASEMENT LB = LICENSED BUSINESS O.R.B. = OFFICIAL RECORD BOOK P.B. = PLAT BOOK PG = PAGE PGS. = PAGES P.C.P. = PERMANENT CONTROL POINT
--	--	--	--

CAD FILE: Z:\2011\11-961 OP PLAT 4 LOTS 246 & 255-256 & 265 + OS TR 22 & 25.DWG\11-961 OP PLAT 4 REPLAT LOTS 246-255-256_265_OS TRACTS 22&25.DWG		
DATE: 04-04-2011	CHECKED: SFB	PROJECT No.
SCALE: N.T.S.	APPROVED: SFB	11-961
DRAWN: SFB	DWG No. D11-961P	

Keshavarz & Associates, Inc.
 CONSULTING ENGINEERS - SURVEYORS
 711 North Dixie Highway, Suite 201
 West Palm Beach, Florida 33401
 Tel: (561) 689-8600 Fax: (561) 689-7476 LB 4897

PLOT DATE: Jul 27, 2011 TIME: 9:05am BY: sharon
 DRAWING: 212011\11-961 OP Plat 4 Lots 246 & 255-256 & 265+OS TR 22 & 25.DWG\11-961 OP Plat 4 Lots 246 & 255-256_265_OS TRACTS 22&25.DWG